

A linear programming optimization model applied to the decision-making process of a Brazilian e-commerce company

Um modelo de otimização de programação linear aplicado ao processo de tomada de decisão de uma empresa brasileira de comércio eletrônico

Prof. MSc. Fabrício Alves de Almeida¹
Prof. MSc. João Paulo Barbieri²
Prof. PhD. José Arnaldo Barra Montevechi³
Prof. PhD. José Henrique de Freitas Gomes⁴
Prof. PhD. Alexandre Ferreira de Pinho⁵

¹Professor at the Department of Economics of the Faculty of Applied Social Sciences of the South of Minas (FACESM), Master in Production Engineering at the Federal University of Itajubá (UNIFEI) and Bachelor in Economic Sciences at the FACESM. Itajubá, Minas Gerais, Brazil.
fabricao.alvesdealmeida@gmail.com

²Professor at the Department of Management Science of the Federal Institute of South of Minas Gerais, Master in Production Engineering at the Federal University of Itajubá (UNIFEI) and Bachelor in Management Science at FACESM. Machado, Minas Gerais, Brazil.
joao.barbieri@ifsuldeminas.edu.br

³Professor at the Institute of Industrial Engineering and Management of the Federal University of Itajubá (UNIFEI), PhD in Mechanical Engineering at the University of São Paulo (USP), Master in Mechanical Engineering at the Federal University of Santa Catarina (UFSC) and Bachelor in Mechanical Engineering at the UNIFEI. Itajubá, Minas Gerais, Brazil.
montevechi@unifei.edu.br

⁴Professor at the Institute of Industrial Engineering and Management of the Federal University of Itajubá (UNIFEI), PhD in Production Engineering at the UNIFEI, Master in Production Engineering at the UNIFEI and Bachelor in Mechanical Engineering at the UNIFEI. Itajubá, Minas Gerais, Brazil.
ze_henriquefg@unifei.edu.br

⁵Professor at the Institute of Industrial Engineering and Management of the Federal University of Itajubá (UNIFEI), PhD in Mechanical Engineering at the São Paulo State University (UNESP), Master in Production Engineering at the UNIFEI and Bachelor in Mechanical Engineering at the UNIFEI. Itajubá, Minas Gerais, Brazil.
pinho@unifei.edu.br

Abstract

The decision-making process is not always simple and requires a more careful analysis to maximize the company's revenue. This paper proposes a linear programming model applied to the decision-making of the section of quality monitoring and packaging of a Brazilian company of e-commerce, in which the simplex method was used to maximize the company's revenue from historical time data of the activities for each type of product. From the results, it was verified which products should be prioritized, providing a revenue of US\$ 74,681.50. In addition, a simulation was applied to include two employees in the process, which would provide a 32.76% increase in the company's profitability and a new revenue of US\$ 99,145.00.

Key-words: Linear programming; Optimization; Simplex method; E-commerce; Decision-making.

Resumo

O processo de tomada de decisão nem sempre é simples e requer uma análise mais cuidadosa para maximizar a receita da empresa. Este trabalho propõe um modelo de programação linear aplicado à tomada de decisão do setor de monitoramento e embalagem da qualidade de uma empresa brasileira de e-commerce, no qual o método simplex foi utilizado para maximizar a receita da empresa a partir de dados históricos das atividades para cada tipo de produto. A partir dos resultados, verificou-se quais produtos deveriam ser priorizados, proporcionando uma receita de US\$ 74.681,50. Além disso, uma simulação foi aplicada para incluir dois funcionários no processo, o que proporcionaria um aumento de 32,76% na lucratividade da empresa e uma nova receita de US\$ 99.145,00.

Palavras-chave: Programação linear; Otimização; Método Simplex; E-commerce; Tomada de decisão.



1 Introduction

The scarcity of resources and high competitiveness cause companies to seek improvement of their processes. However, focusing only on the production process cannot bring satisfactory results (Almeida *et al.*, (2018a)). Prioritizing other sectors, such as inspection and assembly, favours the outcome of the process by maximizing the company's efficiency. Therefore, many companies seek to make decisions through process planning in which continuous improvement programs are often applied.

Decision-making is characterized by being critical for organizations (Freitas *et al.*, 1997) and can be applied to situations of risk or uncertainty. According to Motta and Vasconcelos (2002), the rational decision model created from the classical economics is characterized at different stages, such as: problem identification; alternative solutions development; alternatives solutions comparison; decisions implementation. Many papers address the decision-making and administrative process, such as: Sousa *et al.*, (2017); Silva *et al.*, (2015); Triches *et al.*, (2015); Araújo *et al.*, (2009); Machado (1999); Ocanã (1999); Freitas *et al.*, (1997) and Gasson (1973). At the same way, several papers use mathematical methods and applications to optimize results, such as: Almeida *et al.*, (2018b); Perdoná *et al.*, (2017); Sousa and Soares, (2014); Longaray and Damas, (2013), Bandeira *et al.*, (2010).

The decision-making process is often not intuitive, requiring detailed analyses to the best choice. Proposing analytical solutions can bring satisfactory results, since the decision theory has a mathematical foundation. Thus, modelling the problem through linear programming (LP) can bring

satisfactory results, since, according to Cooper, Edgett, and Kleinschmidt (2000), quantitative models are widely used by organizations.

The Linear Programming (LP) is a technique used to find an optimal point for several variables from an established function, satisfying a set of constraints. LP stands out as one of the most efficient techniques for management tools, in which it is applied in several sectors as in Hall (2010), Nash (2000), Yang and Lin (2000). Among the algorithms used in linear programming, the Simplex algorithm is the most used for LP problem solving.

It is possible to find in the literature several studies involving mathematical modeling applied for decision making, such as Meng *et al.* (2014), who developed a study in the area of *B2B* e-business, proposing a stochastic programming model in which the objective function is to minimize the total cost. This work is similar to the study proposed by our paper. Meng *et al.* (2014) used the linear decision rule and analyzed the central allocation among all retailers in the supply chain through the dual theorem and cooperative game theory. It is equally important to cite the work of Fathian, Sadjadi and Sajadi (2009). These authors used another programming technique: the model based on Geometric Programming (GP) to analyze the price and quality of service for e-business companies. In this work, GP was applied to determine the optimum solution of the model that considers the price and the marketing practiced in Internet-based service providers.

Therefore, applying mathematical techniques (such as LP) to aid the decision-making process is widely studied, especially in a promising context, such as e-commerce. Using already-established techniques (such as the Simplex

method) in a business-to-customer (B2C) model can provide interesting contributions to the e-business area, which is on the rise on the world stage. This paper seeks to use a linear programming approach in the decision-making process applied to a sector of a particular Brazilian e-commerce company. Among the various sectors, the study refers to the sector of quality monitoring and packaging for specific products. In this way, the Simplex optimization method was used to maximize the company's revenue from historical time data of the activities for each type of product. The data collection was performed during a determined period and the mean of times collected provided the time values (minutes) of assembly of each product. As a LP algorithm, the Simplex algorithm was used from Solver® software to achieve the informations to make the best decision-making.

2 Matemathematical model of simplex method

The search for process improvements and revenue maximization usually highlights the use of algorithms and mathematical models that help to find a satisfactory result, within the restrictions imposed. Among the methods, it can be highlighted: Genetic Algorithm (Gomes et al., 2018a), Ants Colony (Vuong et al., 2018), Particle Swarm (Liu et al., 2018), SunFlower (Gomes et al., 2018b), among others. However, for linear problems, one must use an algorithm that adequately contemplates the structure of the problem, such as the Simplex Method.

According to De Cosmis and De Leone (2012), it follows the steps for executing an iteration of the Simplex algorithm. In a single iteration for the primal (in Simplex method), one must assume the current basis $B \subseteq \{1, \dots, n\}$ and $x \in X$ as the current Basic

Feasible Solution (BFS), thus $x_B = A_B^{-1}b \geq 0$, where

$$x_n = 0 \text{ and } |B| = m.$$

Therefore, $B = \{j_1, j_2, \dots, j_m\}$ and $N = \{1, \dots, n\} \setminus B = \{j_{m+1}, \dots, j_n\}$. From this, it is calculated $\pi = A_B^{-T} c_B$ and the reduced cost vector $\bar{c}_{jk} = c_{jk} - A_{.jk}^T \pi, \quad k = m+1, \dots, n.$

If $\bar{c}_{jk} \geq 0, \quad \forall k = m+1, \dots, n$, the current point is a BFS, that is, the algorithm is finished.

Otherwise, if \bar{c}_N is not greater than or equal to zero, select j_r with $r \in \{m+1, \dots, n\}$ such that $\bar{c}_{j_r} < 0$. In this way, such a variable can enter the database.

In this case, it is calculated $\bar{A}_{.j_r} = A_B^{-1} A_{.j_r}$. If $\bar{A}_{.j_r} \leq 0$ the problem is unlimited at the bottom, so the algorithm is interrupted.

If not, calculate:

$$\bar{\rho} = \min_{i: \bar{A}_{ij_r} > 0} \left\{ \frac{(A_B^{-1}b)_i}{\bar{A}_{ij_r}} \right\}$$

Thus, $s \in \{1, \dots, m\}$ such that

$$\left\{ \frac{(A_B^{-1}b)_i}{\bar{A}_{is_j_r}} \right\} = \bar{\rho}; j_s$$

be the variable that comes out.

In view of this, it must define $\bar{x}_{j_k} = 0, \quad k = m+1, \dots, n, \quad k \neq r; \quad \bar{x}_{j_r} = \bar{\rho};$
 $\bar{x}_B(\rho) = A_B^{-1}b - \bar{\rho}\bar{A}_{.j_r}$ and

$$\bar{B} = B \setminus \{j_s\} \cup \{j_r\} = \{j_1, j_2, \dots, j_{s-1}, j_r, j_{s+1}, \dots, j_m\}$$

As well, De Cosmis and De Leone (2012) states that when a non-degenerate step is performed, the value of the objective function decreases strictly. In this way, the Simplex method will be completed after a finite number of iterations

if all BFS are non-degenerate. If there is degeneracy, the value of the objective function must remain constant and the algorithm will go into infinite loop. In conclusion, specific rules must be implemented to this algorithm to avoid this situation.

3 Case study

According to United Nations Conference on Trade and Development [UNCTAD] (2015), Brazil is among the countries that generate greater revenues in B2C (business-to-customer) - trade conducted directly between the company and the final consumer - considering the number of online buyers. In a real case of an e-commerce company, it was evaluated the behaviour of a particular assembly and packaging sector to increase its revenue. In this sector, five different products are worked. The products have net revenue of: US\$ 2,390.90 (P1); US\$ 2,290.90 (P2); US\$ 2,190.90 (P3); US\$ 2,090.90 (P4) and; US\$ 990.90 (P5).

According to the company's sales history, it is known that the product P1 has a daily demand from

3 to 12 units. The product P2 has a minimum demand of 2 daily units and a maximum demand of 12 daily units. For products P3 and P4, the maximum daily demand is, respectively, 7 and 8 units per day. Finally, product P5 has a minimum demand of 2 units and a maximum demand of 11.

Before being dispatched, each product goes through the processes of quality and packaging. An overview of the process without any kind of interference was done before collecting the data and designing a mathematical model that represents the reality of the company. After obtaining this wide view of the process, the data collection was performed randomly for seven days from 10 a.m. to 3 p.m. using filming. The data are available in Table 1. Using a statistical counter, the mean time spent in this process was estimated in minutes; this is illustrated in Figure 1. Therefore, one has:

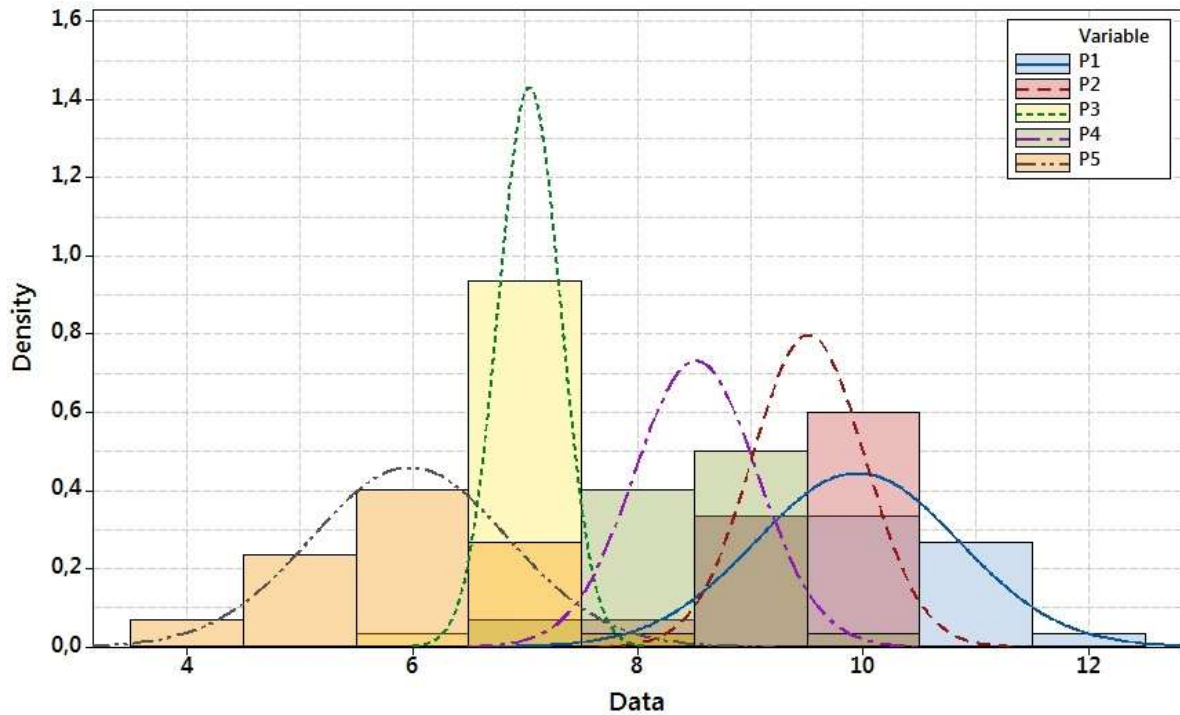
- Φ_{P1} – 10 minutes;
- Φ_{P2} – 9.5 minutes;
- Φ_{P3} – 7 minutes;
- Φ_{P4} – 8.5 minutes;
- Φ_{P5} – 6 minutes.

Table 1 – Process time data (min)

Observation	P_1	P_2	P_3	P_4	P_5
1	9.7807	9.5347	6.8523	8.1110	6.5092
2	9.0888	9.3435	6.8855	9.3165	6.2169
3	9.2285	9.4522	7.2780	8.8863	7.8224
4	7.8197	8.3920	7.7283	8.4425	5.7634
5	9.0758	9.4428	6.8327	8.7462	6.7567
6	9.1640	9.9051	7.0699	8.5265	6.6635
7	10.1769	9.8377	7.2606	7.3550	6.2056
8	10.3329	9.3647	6.7132	8.8250	6.0140
9	10.6596	10.0211	6.9320	8.3742	5.5999
10	8.9124	9.8059	7.3235	9.9811	5.4431
11	9.1215	8.9117	7.2896	8.9689	5.5625
12	9.9847	9.6847	7.1293	8.8295	5.2269
13	10.9500	9.8157	6.6868	8.4060	6.4162
14	10.4159	9.7854	7.1972	8.6959	4.1715
15	10.7052	10.0655	7.3982	8.2149	7.0691
16	10.1750	10.0920	7.0590	8.4564	6.2241
17	10.8565	9.2105	7.2622	8.2789	5.6648

18	9.2806	10.1184	7.1016	8.4135	6.0815
19	10.0592	9.7793	6.8890	7.9982	6.1467
20	10.0027	9.8792	7.0901	8.0112	6.9387
21	11.6205	8.7143	7.1717	8.6011	5.6889
22	10.6051	10.0535	6.9794	8.5520	6.7445
23	9.5859	9.0222	6.6346	9.1192	5.3412
24	9.3386	9.1969	7.0351	8.6181	3.9047
25	11.1570	8.2058	7.0305	8.3921	5.4135
26	8.9365	9.9409	7.0649	8.1602	6.8971
27	11.2764	9.0321	7.2514	8.7549	5.2453
28	9.0843	9.6974	6.7801	8.7783	5.2474
29	11.3317	9.5827	7.1183	8.7887	5.1377
30	9.8615	9.6979	6.2393	7.0121	7.3208
Mean	10.0	9.5	7.0	8.5	6.0
Std. Dev.	0.9	0.5	0.3	0.5	0.9

Figure 1 – Graphical representation of time distributions



4 A linear programming optimization model applied to the decision-making process of a Brazilian e-commerce company

4.1 Application

From the information collected, described in the previous section, it is possible to design the mathematical model for this case study. Adopting the values of the products as constants β_i , one has the decision variables of the model as the quantity of products to be checked and assembled for

sending, x_1, x_2, \dots, x_5 for products P1, P2, ..., P5, respectively.

The products are not divisible, so the values generated for x_n must be integers. Thus, according to the information collected, one can formulate the constraints of the model.

Inequality constraints represent the demand for products, i.e., the daily amount that the organization can meet. As an additional restriction, $m(x)$, it can be stated that the prepared and

packaged quantity of the product P1, P2, P3, P4 and P5 must be greater than or equal to zero.

The Equation 1 presents the objective function of the problem.

$$\begin{cases}
 \text{Max } F(\mathbf{y}) = \sum_{j \geq 0} [\beta_j x_j] = 2,390.90x_1 + 2,290.90x_2 + 2,190.90x_3 + 2,090.90x_4 + 990.90x_5 \\
 \text{Subject to :} \\
 g(x) = \sum_{j \geq 0} [\phi_j x_j] = 10x_1 + 9.5x_2 + 7x_3 + 8.5x_4 + 6x_5 \leq 300 \\
 h(x) = 3 \leq x_1 \leq 12 \\
 i(x) = 2 \leq x_2 \leq 12 \\
 j(x) = x_3 \leq 7 \\
 k(x) = x_4 \leq 8 \\
 l(x) = 2 \leq x_5 \leq 11 \\
 m(x) = x_n \geq 0; \quad n = \{1, 2, \dots, 5\}
 \end{cases} \quad (1)$$

4.2 Results

Through the application of linear programming by the Simplex method, it was reached an optimal solution, generating the values of P1 to P5 aiming to maximize the daily revenue and respecting the restrictions imposed. According to the results found by Solver®, it is possible to verify that all available time (5:00 hour or 300 min) has been used to check and pack the products. Thus, only P3 and P4 products meet every daily demand. Considering the restrictions, it is necessary to prepare and pack the quantity demanded of these products (7 and 8 units, respectively).

Products P1, P2 and P5 meet the minimum restriction of their units. However, the result shows that these products do not meet part of the daily demand in quantities of 5, 2 and 8 units, respectively.

Therefore, the model shows the quantity required to be checked and packaged for each product, in which seven units will be made for P1, ten for product P2, seven for product P3, eight for product P4 and three units for product P5, thus

reaching an optimal solution for the model, maximizing revenue by US\$ 74,681.50.

4.3 Simulated scenario

From the result found, it is verified that the time restriction was totally used, i.e., it is a scarce resource where any change in it will cause a change in the optimal solution and consequently in the revenue. There are also scarce restrictions on P3 and P4 products, in which every quantity demanded is attended by the company.

The products P1, P2 and P5 in the solution shows that the company no longer meets the market with these three products in 5, 2 and 8 units respectively, even when meeting the minimum demand. For this problem, the company has some solutions such as: application of resources (since the demand for these products is bigger that the company can meet, it would be up to it to use part of the investments in marketing these products for another activity); increase of the market value of these products; increase of the number of employees for this function.

In order to verify this last hypothesis, the simulation of the hypothetical model was performed based on the use of two employees from historical data; therefore, the time of activity has been reduced. The mathematical model can be verified in Equation 2, describing only the constraint $g(x)$, in which it was altered. The objective function $F(Y)$ and the other constraints [$h(x)$ to $m(x)$] remain the same as in Equation 1.

$$g(x) = \sum_{j \geq 0} [\phi_k \cdot x_j] = 5x_1 + 4.75x_2 + 3.5x_3 + 4.25x_4 + 3x_5 \leq 300 \quad (2)$$

In view of this new analysis, it would be up for the company to assess whether it is feasible to add it to such activity, given the availability and value of the labour of another operator and equipment, since a significant increase in revenue occurred.

5 Conclusion

This paper uses a linear programming model to optimize a decision-making process of a Brazilian company of e-commerce using the Simplex method. The data of the times of each product of the process was collected to represent the reality of the company.

From the mathematical abstraction of the problem, it was possible to apply the optimization method to find the optimal solution of the problem. The result would provide a revenue of US\$ 74,681.50, meeting all the constraints of the model, but presenting different clearance values. Before this diagnosis, a hypothetical simulation was made adding another employee, reducing the time restriction.

The new solution showed that the new situation would meet all the demands of products, bringing a new daily revenue of US\$ 99,145.00 to the company, with a considerable increase of 32.76%, from the previous revenue.

From this hypothesis, it is possible to verify that all demand can be met, increasing daily revenue by 32.76%, with a value of US\$ 99,145.00 per day. In addition, operators would end their activities 91.5 minutes (01:31:30 hour) earlier than the cut-off time, so they could engage in another activity at this time.

Finally, it can be inferred from the results that prioritizing products that generate higher revenues may not be the best decision-making strategy. Moreover, the simulation that search to meet the restriction of clearance shows that the addition of an employee would add bigger profitability to the company. These results are already in application in the company studied. For future applications, the same method can be used for other sectors, besides making a model that contemplates all sectors, realizing experimental designs from established techniques such as Full Factorial Design and the Response Surface Methodology.

6 Acknowledgments

The authors would like to express their gratitude to FAPEMIG, CAPES and CNPq for their support in this research.

References

- Almeida, F.A. De Paula, T.I. Leite, R.R. Gomes, G.F. Gomes, J.H.F. Paiva, A.P. Balestrassi, P.P. (2018a). A multivariate GR&R approach to variability evaluation of measuring instruments in resistance spot welding process. *Journal of Manufacturing Process*, 36, p.465-479.

- Almeida, F.A. Gomes, G.F. De Paula, V.R. Corrêa, J.E. Paiva, A.P. Gomes, J.H.F. Turrioni, J.B. (2018b). A Weighted Mean Square Error Approach to the Robust Optimization of the Surface Roughness in an AISI 12L14 Free-Machining Steel-Turning Process. *Strojniški vestnik - Journal of Mechanical Engineering*, 64, 3, p.147-156.
- Araújo, S. A. Librantz, A. F. H. Alves, W. A. L. Algoritmos genéticos na estimação de parâmetros em gestão de estoque. *Exacta*, São Paulo, v. 7, n. 1, p. 21-29, 2009.
- Bandeira, A. A. Guimarães, C. D. Freitas, L. A. Santos, L. M. Algoritmos de otimização aplicados à solução de sistemas estruturais não-lineares com restrições: uma abordagem utilizando os métodos da Penalidade e do Lagrangiano Aumentado. *Exacta*, São Paulo, v. 8, n. 3, p. 345-361, 2010.
- Cooper, R., Edgett, S. J., & Kleinschmidt, E. J. (2000). New problems, new solutions: making portfolio management more effective. *Research Technology Management*, 43(2), 18–33.
- De Cosmis, S., & De Leone, R. (2012). The use of grossone in Mathematical Programming and Operations Research. *Applied Mathematics and Computation*, 218(16), 8029–8038.
- Fathian, M., Sadjadi, S. J., Sajadi, S., (2009). Optimal pricing model for electronic products. *Computers & Industrial Engineering*, v56, 255–259.
- Freitas, H., Becker, J. L., Kladis, C. M., & Hoppen, N. (1997). *Informação e decisão: sistema de apoio e seu impacto*. Porto Alegre: Ortiz.
- Gasson, R. (1973). Goals and values of farmers. *Journal of Agricultural and Resource Economics*, 24, 521-537.
- Gomes, G.F., Almeida, F.A., Cunha Jr., S. S., Sousa, B. S., & Ancelotti, Jr., A. C. (2018a). An estimate of the location of multiple delaminations on aeronautical CFRP plates using modal data inverse problem. *The International Journal of Advanced Manufacturing Technology*, 99, 5-8, 1155-1174.
- Gomes, G.F., Cunha Jr., S. S., Sousa, B. S., & Ancelotti, Jr., A. C. (2018b). A sunflower optimization (SFO) algorithm applied to damage identification on laminated composite plates. *Engineering with Computers*, 35, 128.
- Hall, J. A. J. (2010). Towards a practical parallelisation of the simplex method. *Computational Management Science*, 7(2), 139–170.
- Liu, J., Zhang, H., He, K., & Jiang, S. (2018). Multi-objective particle swarm optimization algorithm based on objective space division for the unequal-area facility layout problem. *Expert Systems with Applications*, v.102, 179-192.
- Longaray, A. A. Damas, T. P. (2013). Modelo de programação inteira para a otimização da produção de carne de novilhos em rebanhos de corte: um estudo de caso. *Exacta – EP*, São Paulo, v. 11, n. 2, p. 161-171.
- Machado, J. A. D. (1999). *Análisis del sistema informacion-decision en agricultores de regadio del valle medio del Guadalquivir*, Universidad de Córdoba, Córdoba, España.
- Meng, Q. C., Zhang, T., Li, M., & Rong, X. X., (2014). Optimal Order Strategy in Uncertain Demands with Free Shipping Option. *Discrete Dynamics in Nature and Society*. v2014, 1-6.
- Motta, F. C. P., & Vasconcelos, I. F. G. (2002). *Teoria geral da administração*. São Paulo: Thomson.
- Nash, J. C. (2000). The (Dantzig) simplex method for linear programming. *Computing In Science & Engineering*, 2(63), 29–31.
- Ocanã, A. R. (1999). *Propuesta metodológica para el análisis de la toma de decisiones de los agricultores: aplicación al caso del regadío extensivo codobés*. Universidad de Córdoba, Córdoba, España.
- Perdoná, I. I. Nunes, R. V. Neves, R. M. Naimer, S. C. Godoy, L. P. (2017). Sistema de manufatura: otimização de processos em uma unidade fabril de cimento através da teoria das filas. *Exacta – EP*, São Paulo, v. 15, n. 4, p. 13-25.
- Silva, G. F. Frazzon, E. M. Casarotto Filho, N. (2015). Proposta de método de otimização-simulação para apoiar a tomada de decisão em internalização de processos produtivos. *Exacta – EP*, São Paulo, v. 13, n. 3.
- Sousa, A. C. Soares, A. K. (2014). Modelo para otimização da operação de sistemas de distribuição de água utilizando o algoritmo genético multiobjetivo SPEA. *Exacta – EP*, São Paulo, v. 12, n. 3, p. 313-324.
- Sousa, S. R. O. Costa, L. E. C. Lacerda, M. S. Agostino, I. R. S. Oliveira, R. D. (2017). Elaboração de um estudo de viabilidade para implantação de um sistema de informação no processo de gestão e embarque de líquidos inflamáveis: o caso da empresa Transrio. *Exacta – EP*, São Paulo, v. 15, n. 2, p. 233-243.
- Triches, J. Kripka, M. Boscardin, I. (2015). Otimização aplicada ao problema de alocação de equipes em uma panificadora. *Exacta – EP*, São Paulo, v. 13, n. 3, p. 377-388.
- United Nations Conference on Trade and Development. (2015). Information Economy Report 2015: Unlocking the potential of e-commerce for developing countries. Recuperado em 10 de fevereiro, 2018, de http://unctad.org/en/PublicationsLibrary/ier2015_en.pdf
- Vuong, Q. L., Rigaut, C., Gossuin, Y., (2018). Refraction law and Fermat principle: a project using the ant colony optimization algorithm for

undergraduate students in physics. *European Journal of Physics*, v.39, n.4.
Yang, M. F., & Lin, Y. (2013). Applying fuzzy multi-objective linear programming to project

management decisions with the interactive two-phase method. *Computers and Industrial Engineering*, 66(4), 1061–1069.

Recebido em: 26 mar. 2018 / Aprovado em: 19 jun. 2018

Para referenciar este texto

Almeida, F. A. de, Barbieri, J. P., Montevechi, J. A. B., Gomes, J. H. de F., & Pinho, A. F. de. (2019). A linear programming optimization model applied to the decision-making process of a Brazilian e-commerce company. *Exacta*, 17(3), 149-157. <https://doi.org/10.5585/ExactaEP.v17n3.8503>.